



ABOUT US. GENERAL INTRODUCTION

Heavy Equipment Supply(HES) specializes in the manufacturing and distribution of construction machinery parts, with a focus on Caterpillar®, Komatsu®, Cummins®, and other world-renowned brands.

Headquartered in Tianjin, an industrial and transportation hub of northern China, HES benefits from a strategic location that ensures efficient production and global logistics.

With a professional team averaging over 25 years of industry experience, HES excels in product development, quality assurance, and customer-focused solutions. The extensive inventory allows HES to meet urgent demands and provide a reliable supply for clients worldwide.

HES Covers the full range of construction machinery parts and combines advanced manufacturing capabilities with international distribution expertise to deliver high-quality products and exceptional service to our global customers.



HEAVY EQUIPMENT SUPPLY(TIANJIN) CO.,LTD

China Office : No. 1 Xingang Road, Shuanggang Industrial Park, Jinnan District, Tianjin City, P.R.CHINA

Tel: +86 22 28327248

U.S.A Office : 400 TradeCenter, Suite 5900 Woburn MA 01801, U.S.A

Tel: +1(863)266-3800

Web: www.hes-hd.com **Email:** info@hes-hd.com



HEAVY EQUIPMENT SUPPLY



OUR PRODUCTS



Engine and Engine Parts



■ Heavy Equipment Supply supplies a full range of parts for Caterpillar®, Komatsu®, Cummins® Engines: cylinder blocks, cylinder heads, crankshafts, camshafts, pistons, liners, connecting rods, bearings, valves, injectors, fuel pumps, timing gears, water pumps, oil pumps, oil coolers, manifolds, fans, filters, turbochargers, starters, alternators and many more.

Transmission and Final Drive Products



■ Heavy Equipment Supply manufactures and supplies a full range of Transmission parts for Caterpillar®, Komatsu®, Cummins® equipment: torque converter parts, main clutch parts, transmission box parts, final drive parts, swing cycle parts, universal joints, friction discs, gears, and many other related products.

Hydraulic Products



■ Heavy Equipment Supply supplies different kinds of Hydraulic products for Caterpillar®, Komatsu® equipment and other popular excavators: gear pumps, vane pumps and cartridges, piston pump parts, valves, cylinders, cylinder rods and high pressure pipes.

Electrical Products



■ Heavy Equipment Supply provides different kinds of electrical products for Caterpillar®, Komatsu®, Cummins®: starters, alternators, switches, lamps, alarms, solenoids and many more.

Undercarriage and Frame Products



■ Heavy Equipment Supply provides a full range of undercarriage parts, bogie and frame parts for Caterpillar®, Komatsu® equipment: track chains, track shoes, idlers, rollers, floating seals, and recoil springs.

G.E.T and Work Equipment



■ Heavy Equipment Supply provides a full line of G.E.T and work equipment for Caterpillar®, Komatsu®, Hitachi®, JCB® and all kinds of popular construction equipment: teeth, tips, adapters, cutting blades, end bits, buckets, and shanks.

Seals and Gaskets



■ Heavy Equipment Supply supplies various seals for Caterpillar®, Komatsu®, Cummins®: engine gaskets, cylinder gaskets, floating seals and other seals for hydraulic products, transmission and undercarriage products.

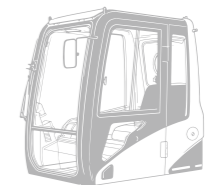
Filters



■ Heavy Equipment Supply provides filters for Caterpillar®, Komatsu® and Cummins® equipment: air filters, engine oil filters, fuel filters, hydraulic filters and other products related with filtration system.



Driving Cab and Parts



■ Heavy Equipment Supply provides driving cab assemblies and their parts, glasses, doors, locks, air conditioners, mounts etc. for all the popular excavators, bulldozers and other machines.

Tools



■ Heavy Equipment Supply provides OE quality tools for fixing the machines, which includes hand guns, pressure meters, scanners etc.

Heavy Equipment Supply supplies a full range of spare parts for Bulldozers, Excavators, Wheel Loaders, Motor Graders, dump trucks and other machines in your fleet, including Caterpillar®, Komatsu®, Cummins® and other well-known brands.